

T AND EXPOR P60-VET

Veterinary Color Doppler Ultrasound System

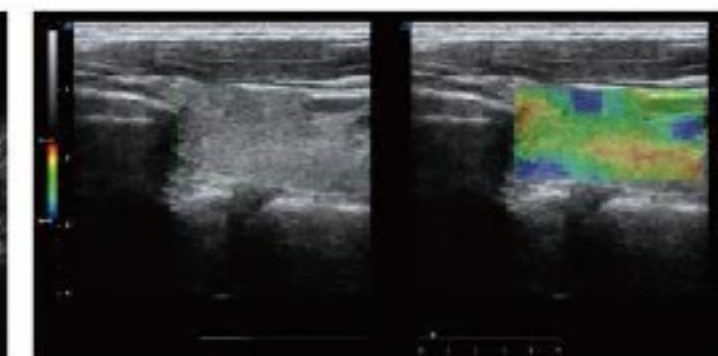


Functions

- 4D Imaging
- Digital Beam Enhancer
- Harmonic Imaging
- Spectral Doppler Imaging
- Contrast Tuned imaging
- PView Wide Field Imaging
- Multiple Beam Synthesis
- B+C Double Real-time Mode
- Spatial Composite Imaging
- Speckle Noise Suppression Technology
- Real Time Triplex
- Frequency Composite Imaging



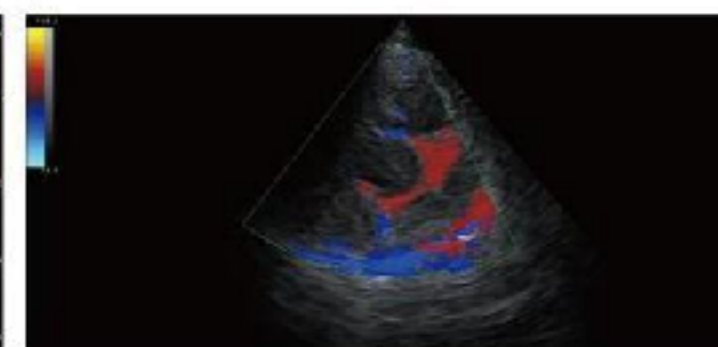
RSI



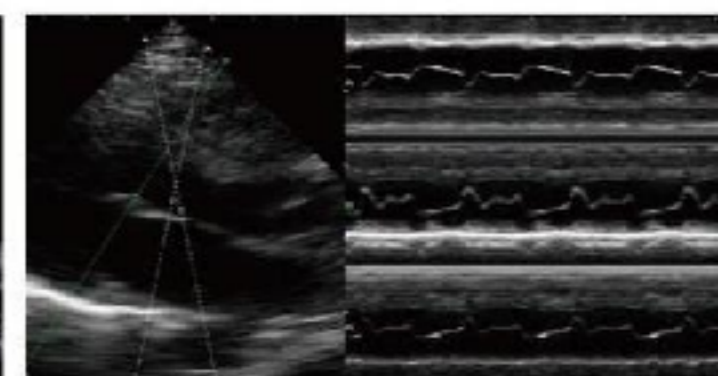
Elasticity Imaging



Color Doppler Imaging



Tissue Doppler Imaging



Anatomic M Mode, Sampling Line ≥ 3 lines

P60-VET uses advanced and stable PC system, combining excellent images, all-round functions, rich image management software together to meet the needs of various animal groups in different environments. The built-in lithium battery with large capacity imported chip, dual probe interface, can be configured with a variety of probes to satisfy the needs of different examination modes.